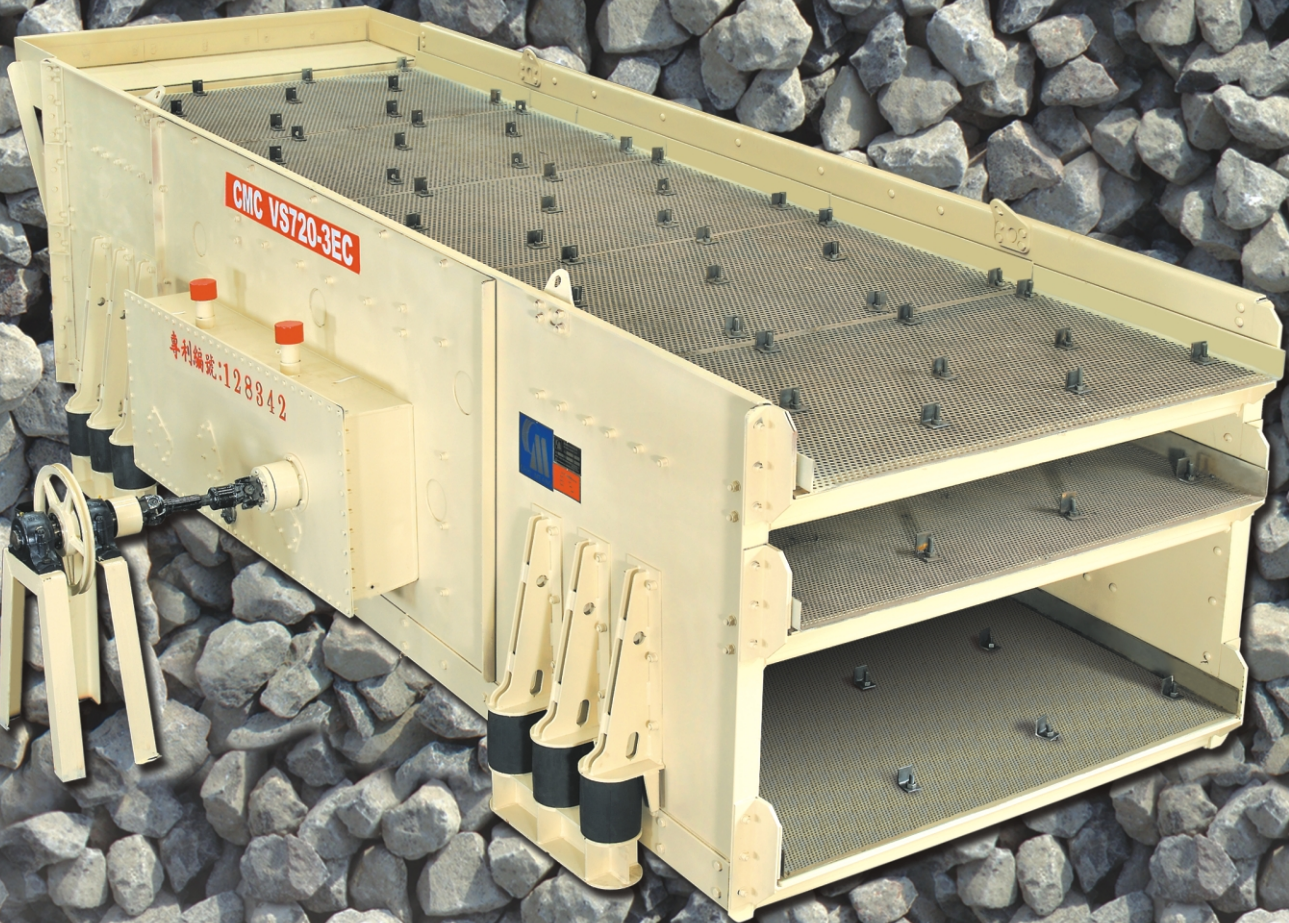


E Series Triple Shafts Horizontal Screen  
CMC E 系列三軸水平式震篩機

[www.chymeang.com](http://www.chymeang.com)



啓銘機械股份有限公司  
CHYI MEANG MACHINERY CO., LTD.



## 啓銘E型水平震篩機提供使用者最大利益 CMC E type Horizontal Vibrating Screen provides maximum benefits for users

- 啓銘機械作為破碎篩分行業的製造者，自1969年累積至今的技術與經驗，推出新款E型水平震篩機，為客戶提供最大競爭優勢。

歷經 A型~E型之不斷研究測試與改進，啓銘之E型震篩機採用三軸震動機構，其橢圓振幅經由實際運轉中證明具有最佳粒子過篩方式：

- CMC, leads crushing and screen technology in Taiwan and develops new generation E type Horizontal Vibrating Screen through the technology and experience since 1969. It provides maximum screen efficiency for users.

Through A type to E type development, field test and improvement, CMC E type Horizontal Vibrating Screen applies special triple shafts vibrating mechanism. The unique oval stroke has proven itself as best efficient material screen through field operation and the advantages are:

- 粒子翻滾容易對正網孔出料。
- 不易塞料。
- 降低循環負荷。
- 粒子過篩效率佳。
- 四種振幅／角度及轉速變化之搭配應用範圍超大，由粗料到砂之篩選皆可適用。
- Opening of screen is perpendicular to material and provides maximum probability of material passage through screen opening.
- Plug-resistant.
- Reduce recirculation load.
- Best screen efficiency
- Wide application ranges from coarse material to sand by 4 alternatives of stroke/angle and speed selections .

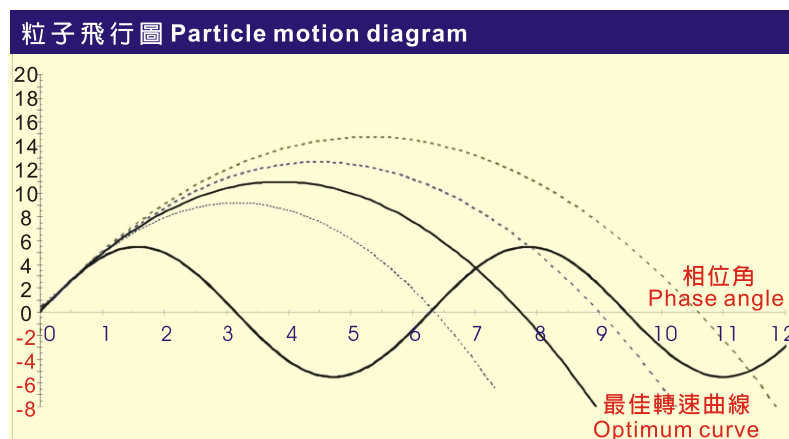
- 耐久堅固的機身設計及傳動軸部零件安裝方式，不但適合任何重負載操作狀況，服務壽命更是超長，為客戶帶來可觀的利潤。

- Solid-rock durable frame design and unique bearings mounting way fit for any heavy duty operation conditions. Service life time is especially long which provides remarkable benefits for customers.

- 一體式篩網支架。
- 使用鉚釘固定機身結構。
- 軸承安裝於固定軸環上。
- Integrated screen deck.
- Huck bolt construction frame.
- Bearings are mounted on still Spindles.

本機各項優點，可使您投資利益最大，更可適用於多種過篩且服務時間特長，保養與維護最省。

The unique advantages enable maximum benefits of your investment. One machine applies in various screen conditions and ultra long service time saves costs of maintenance. °



## ■ 最有效的篩選運動

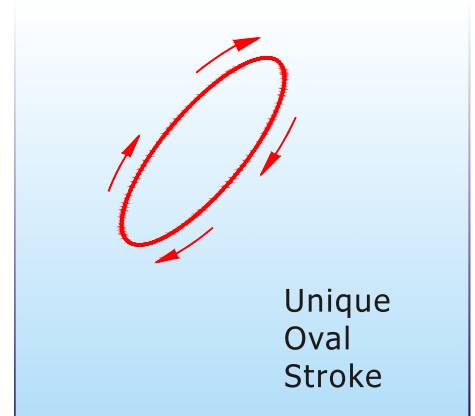
### Efficient Horizontal Screen Action

啓銘E型水平震篩機提供您最有效的篩分動作，從而增加您的利潤，本設計結合圓形及直線震動運動變成最佳之橢圓震幅運動。

Increase your production and profit with the efficient CMC E type horizontal Screen action. This design combines the best features of the circle and straight line throw into a unique oval stroke.

## ■ 橢圓震動優點 Oval Stroke Advantages

- 使用馬力較少 Less horsepower required
- 運轉平順，無直線振幅之急拉動作 Smooth running-eliminates jerking action of straight stroke screens
- 可調整震幅及震動角度 Adjustable angle and length of stroke
- 尖銳狀之過篩物不塞料 Virtually non-plugging in "arrow head" type material
- 粒子於網面移動時，會翻滾容易對正網孔出料 Opening of screen is perpendicular to material and provides maximum probability of material passage through screen opening.



## ■ 可調整的橢圓震幅運動

### Oval Action Adjustable to Any Position

啓銘E型水平震篩機可調整振幅大小與角度及轉速配合篩分狀況作最佳調整，震幅小角度大轉速快適用於細料篩分，而震幅大角度小轉速慢適用於粗料篩分。

Another profit feature found on the efficient CMC E type horizontal Screen is the ability to change the length and angle of the stroke to best suit your screening needs. The more vertical short stroke gives maximum accuracy for separating fines, while the longer more horizontal stroke moves the coarse materials faster.



## 超高過篩效率

### Ultra high screen efficiency

獨特三軸設計，結合傳統直線及圓形震動運動優點，產生橢圓震動使粒子翻滾容易對正網孔出料，具有不易塞料，粒子過篩率佳的優點，當振幅小、轉速(rpm)快，適宜過篩細料；同理振幅大、轉速(rpm)慢，適宜過篩粗料。本機台共四種轉速及振幅與角度變化之搭配選用，彼此選用宜恰當，否則振動分析曲線會在最佳點之外並會影響過篩率。

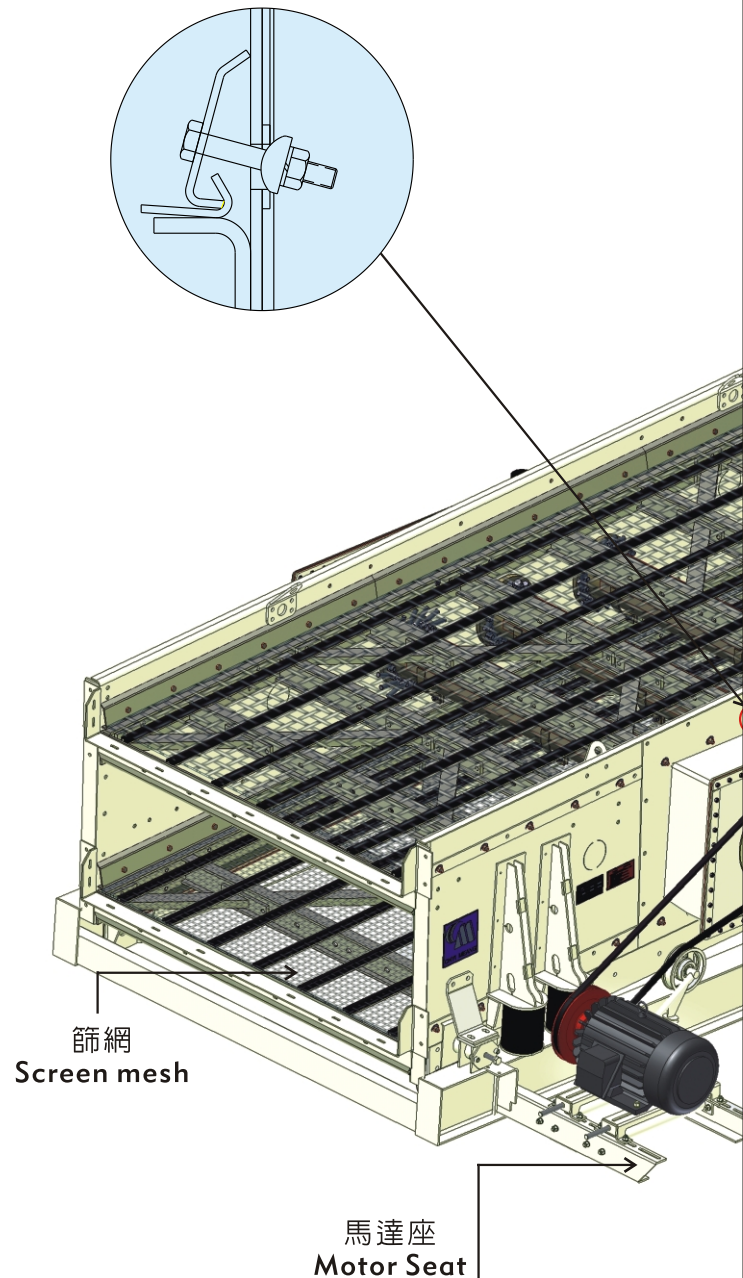
Special triple shaft design combines the best features of the circle and straight line throw into oval stroke. The unique oval stroke makes openings of screen perpendicular to material and provides optimum alignment and maximum probability of material passage through screen openings. The benefits are plug-resistant, better screen efficiency. The fine particles require small stroke with fast speed, while coarse particles require large stroke with slow speed. It is 4 alternatives of stroke and speed for selection. The selection of speed and stroke should be suitable, otherwise, the particles motion will out of optimum point and affect the screen efficiency as shown in the diagram. In other words, smaller screen model can meet same capacity requirement.

## 應用範圍廣

### Wide applications

本設計提供方便迅速變更振幅大小、角度、轉速快慢的方法，藉由此三種參數變化組合，同一機器可適用於不同粒子大小過篩狀況，應用範圍超廣。

Triple shaft design offers easy and fast change of length/angle of stroke and speed. By combination of change of these three Parameters, same screen can suit different material kinds and size condition. The application is very wide.





## 堅固耐用的設計 Rock-solid design

本系列機種機身設計特別堅固耐用適合重負載狀況。

- 高張力邊板。
- 一體式篩網支架。
- 鉚釘鎖結之機身結構。
- 震動箱與邊板鎖結處採三層夾板結構具有相當高抵抗彎曲應力的功用。

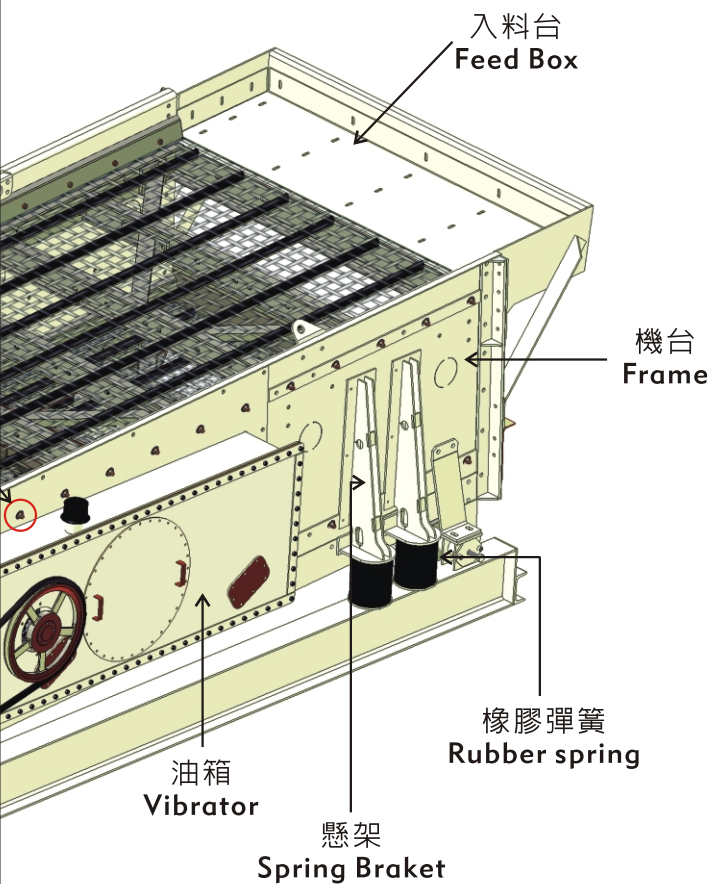
The series of models are designed ultra sturdy and durable and very suitable for heavy duty application.

- High strength side plates.
- Integrated screen deck.
- Huck bolt construction for frame.
- Triple walls around drive and impulse shafts add extra strength in area of greatest stress.

## 節省空間及保養維修方便 Small installation space and easy maintenance

本系列機種震動器位於機台兩側，優於傳統震動器在機台上方之設計，不只節省空間維修保養也容易，特別適合空間狹小之移動式碎石站使用，此外可拆式軸承座使維修更加容易。

The vibrators locate at two sides of frame compared to the top of frame in case of conventional screen. The advantages are small installation space and easy maintenance. This is especially suitable for portable plant which is strict in space requirement. Besides, replaceable bearing seat makes maintenance much easier.



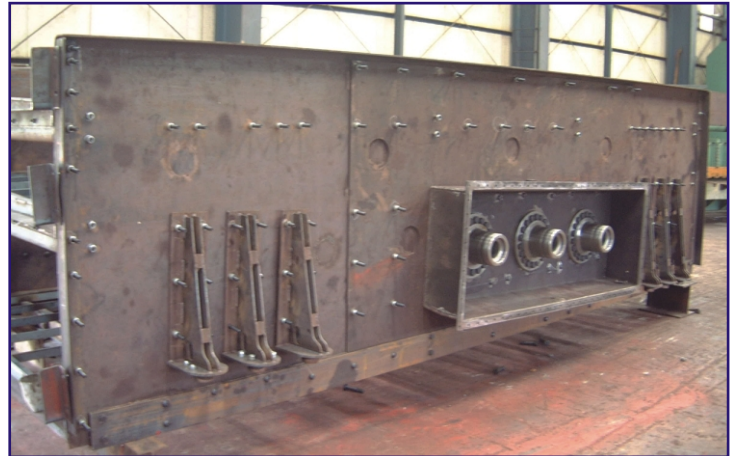


## 超強機身結構

### Ultra robust frame structure

震篩機台採用鉚釘鎖結組立成一個堅固的箱體結構，機台邊板使用高張力鋼板製作而成完全無焊接，一體式的篩網支架具有穩固的支撐力。

Huck bolts construction frames into a box shape structure, high strength frame plates without welding and integrated screen decks with solid support to form a ever robust construction.

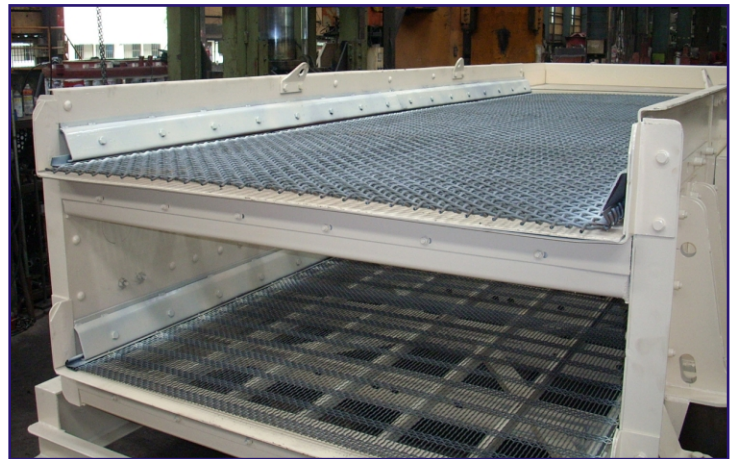


## 篩網支架設計

### Screen deck design

篩網支架採用拱型橫樑設計，具有高強度、低繞曲度等特性。網面採用弧形設計，篩網利用壓板固定可提供最高的篩網張力，篩料可均勻分佈於網面上。

Screen deck adapted arc shape cross beam and has features of high strength and low deflection. Single-crown deck design can provide maximum screen cloth tension and only fixes by fixed plates at two sides. This design spread material evenly across the screen.



## 橡膠彈簧及側向限位塊

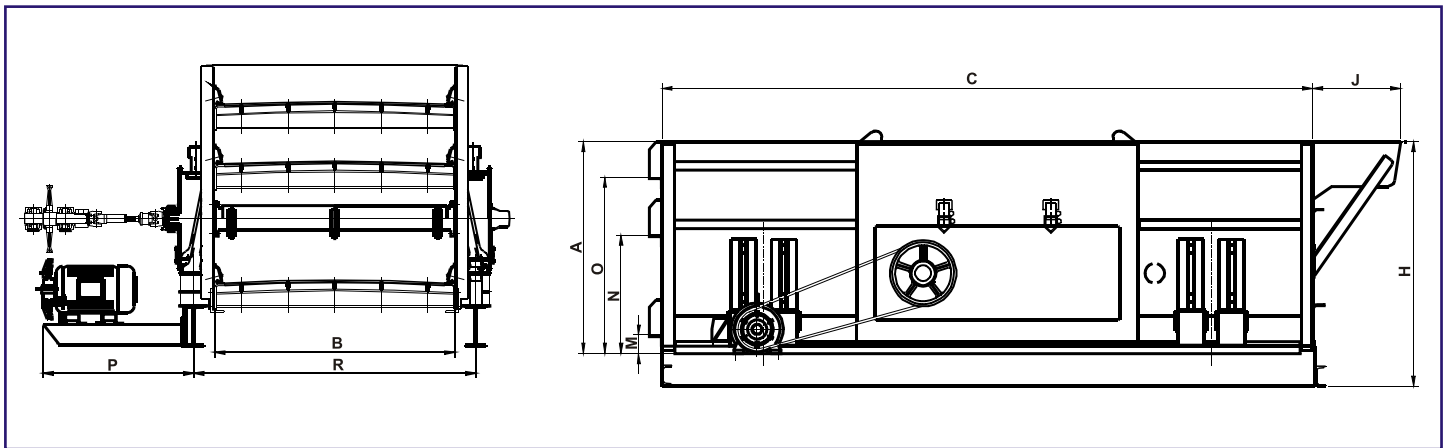
### Rubber spring and Snubbers

全機種採用橡膠彈簧，在啓動與停機時具有大幅降低噪音的特性。限位塊位於震篩機台四個角點，限制機台在啓動與停機時，避免機台與鋼架直接撞擊。

Rubber springs are adapted for all series of screen with characteristics of reducing dramatically noise during start and stop screen. Snubbers locate at four corners to avoid frame collides support structure while starting and stopping screen.



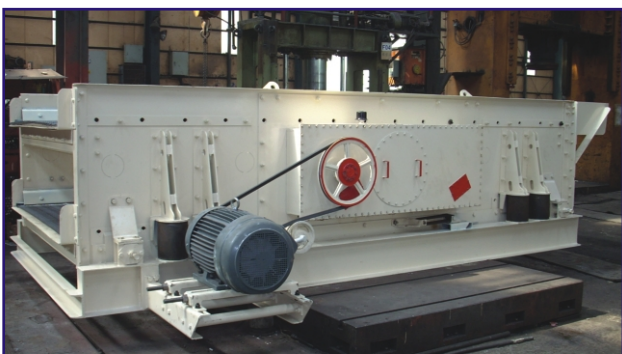




機型 Screen size	馬力 hp(kw)	重量 Basket weight		尺寸 Dimension (mm)									
		Kg	Lbs	A	B	C	H	J	M	N	O	P	R
VS412-2ECW	20(15)	4000	8811	1035	1200	3660	1319	406	156		786	1390	1480
VS412-3ECW	20(15)	4800	10573	1464	1200	3660	1748	406	156	823	1207	1390	1480
VS414-2ECW	20(15)	4375	9637	1035	1200	4270	1319	406	156		786	1390	1480
VS414-3ECW	20(15)	5300	11674	1464	1200	4270	1748	406	156	823	1207	1390	1480
VS514-2ECW	25(19)	4800	10573	1035	1500	4270	1319	500	156		786	1390	1817
VS514-3ECW	25(19)	5880	12952	1464	1500	4270	1748	500	156	823	1207	1390	1817
VS516-2ECW	25(19)	5150	11344	1035	1500	4880	1319	500	156		786	1390	1817
VS516-3ECW	30(19)	6400	14097	1464	1500	4880	1748	500	156	823	1207	1390	1817
VS616-2ECW	30(19)	6850	15088	1165	1800	4880	1435	675	185		905	1390	2110
VS616-3ECW	40(30)	8275	18227	1610	1800	4880	1880	675	185	894	1350	1390	2110
VS620-2ECW	40(30)	7800	17181	1165	1800	6100	1435	675	185		905	1390	2110
VS620-3ECW	40(30)	9500	20925	1610	1800	6100	1880	675	185	894	1350	1390	2110
VS718-2ECW	50(37.5)	8880	19559	1334	2100	5490	1853	675	210		1100	1390	2416
VS718-3ECW	50(37.5)	10850	23899	1763	2100	5490	2200	675	210	1050	1500	1390	2416
VS720-2ECW	50(37.5)	9750	21476	1334	2100	6100	1985	675	210		1100	1390	2416
VS720-3ECW	50(37.5)	12000	26432	1763	2100	6100	2418	675	210	1050	1500	1390	2416
VS820-2ECW	50(37.5)	10900	24009	1334	2400	6100	1985	675	210		1100	1390	2716
VS820-3ECW	60(45)	13500	29736	1763	2400	6100	2418	675	210	1050	1500	1390	2716

備註: 上述規格尺寸僅供參考, 啓銘有權變動而不必另行通知

Remark: The above specification is only for reference, CMC reserves rights to change without notice.





## 對客戶的承諾 啓銘責任的開始

### Commitment for customers is the start of CMC'S responsibility

■ 啓銘機械自1969年由董事長簡正旭先生創立以來，數十年來，啓銘堅持“品質、服務、創新”的經營理念以及精益求精的精神不斷在產品技術製程上致力改善。追求碎石設備之現代化、先進化及生產流程簡單化、一貫化以滿足客戶的需求，範圍涵蓋整廠碎石設備諮詢的規劃、設計、安裝、售後服務及操作訓練。

一本以往精神，傾聽客戶的需求，追求更先進技術，致力產品國際化，期能為客戶創造更大利益，為社會建設做出更多的貢獻。

■ Since CMC (Chyi Meang Machinery Co.,Ltd) was founded in 1969, by Mr. Jean Hsu Chien, For decades, CMC insists "Quality, Service, Innovation"-company motto and the spirit of pursuing better on better in continuous improvement on product technology and manufacture facilities/process.CMC has devoted to the modernization of stone crusher and the production process simplification/centralization to meet customer satisfaction. Our ranges cover consultancy, planning, design, manufacture, installation, after sales service and training of complete stone crusher plant equipments.

CMC keeps same spirit as usual,pursues more advance technology,devote to products' internationalization. CMC endeavors to create maximum advantages for clients.

#### 桃園廠 Office & Factory ( Taoyuan )

桃園縣八德市介壽路二段535號  
No. 535 Chieh-Shou Rd. Sec. 2. Pate  
City Taoyuan Hsien Taiwan  
Tel : 886-3-3666167-9  
Fax : 886-3-3668366



#### 雲林廠 Office & Factory ( Yunlin )

雲林縣林內鄉重興村68之50號  
No. 68-50, Chongsing Village,  
Yunlin County, Taiwan  
Tel : 886-5-5890167-8  
Fax : 886-5-5890169



#### 屏東廠 Office & Factory ( Pingtung )

屏東縣里港鄉三和路119之66號  
No. 119-66, Sanhe Rd., Ligang Township,  
Pingtung County, Taiwan  
Tel : 886-8-7733735,7733730  
Fax : 886-8-7733732



#### 中國廈門廠 Office & Factory ( Xiamen )

福建省龍海市龍池開發區  
鴻漸工業園橫二路4之1號  
No.4-1, Heng Erh Road, Hong Jian  
Industrial Park, Long Chi Development  
Zone, Long Hai City, Fujian Province  
Tel : 86-596-6769-799  
Fax : 86-596-6769-199



**啓銘機械股份有限公司**  
**CHYI MEANG MACHINERY CO., LTD.**

E-mail : [sales@chyimeang.com](mailto:sales@chyimeang.com)  
[http : //www.chyimeang.com](http://www.chyimeang.com)

Agent/Distributor: